



Town of Waverly Community Spotlight

The Northwestern Gateway of the Adirondack Park.

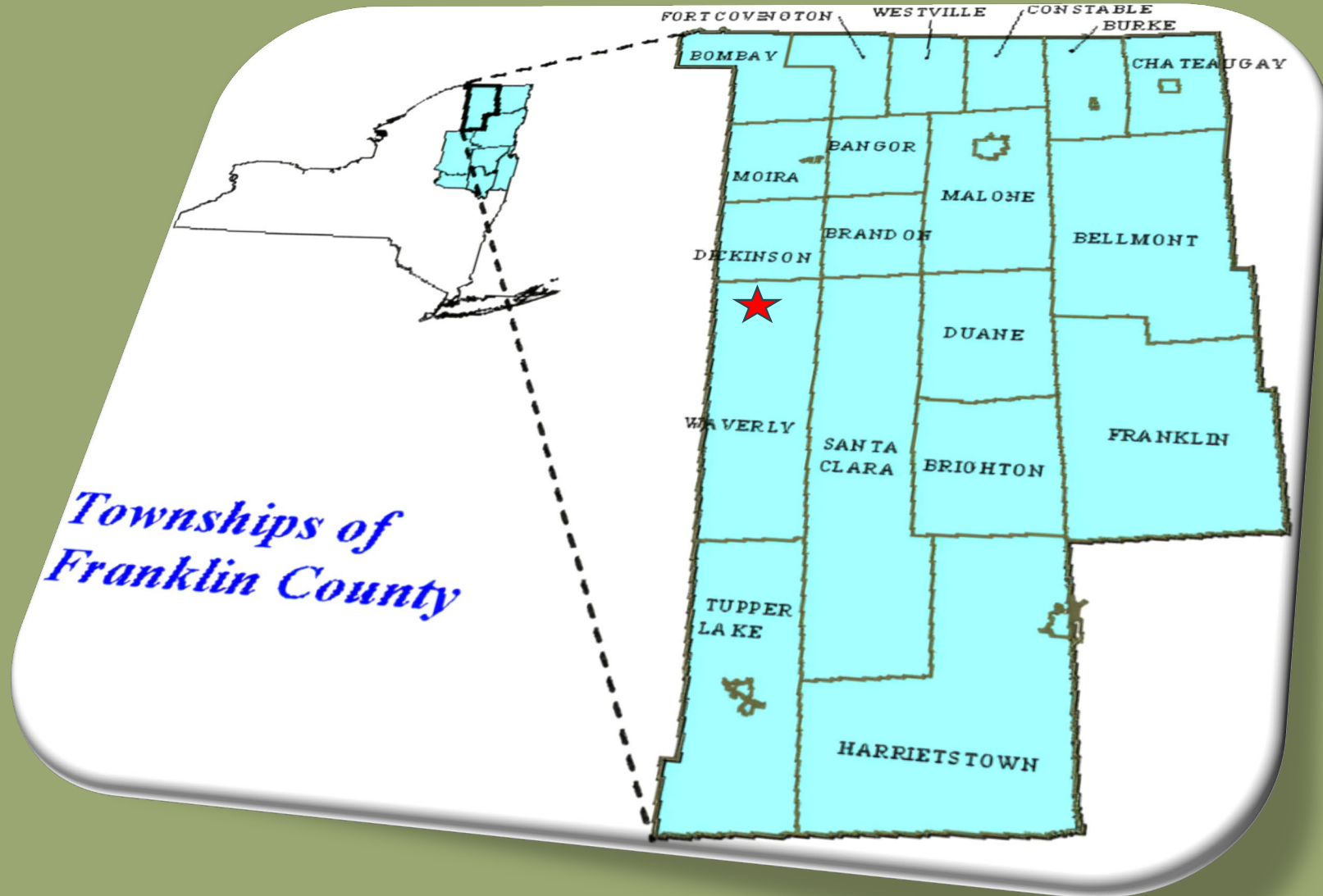
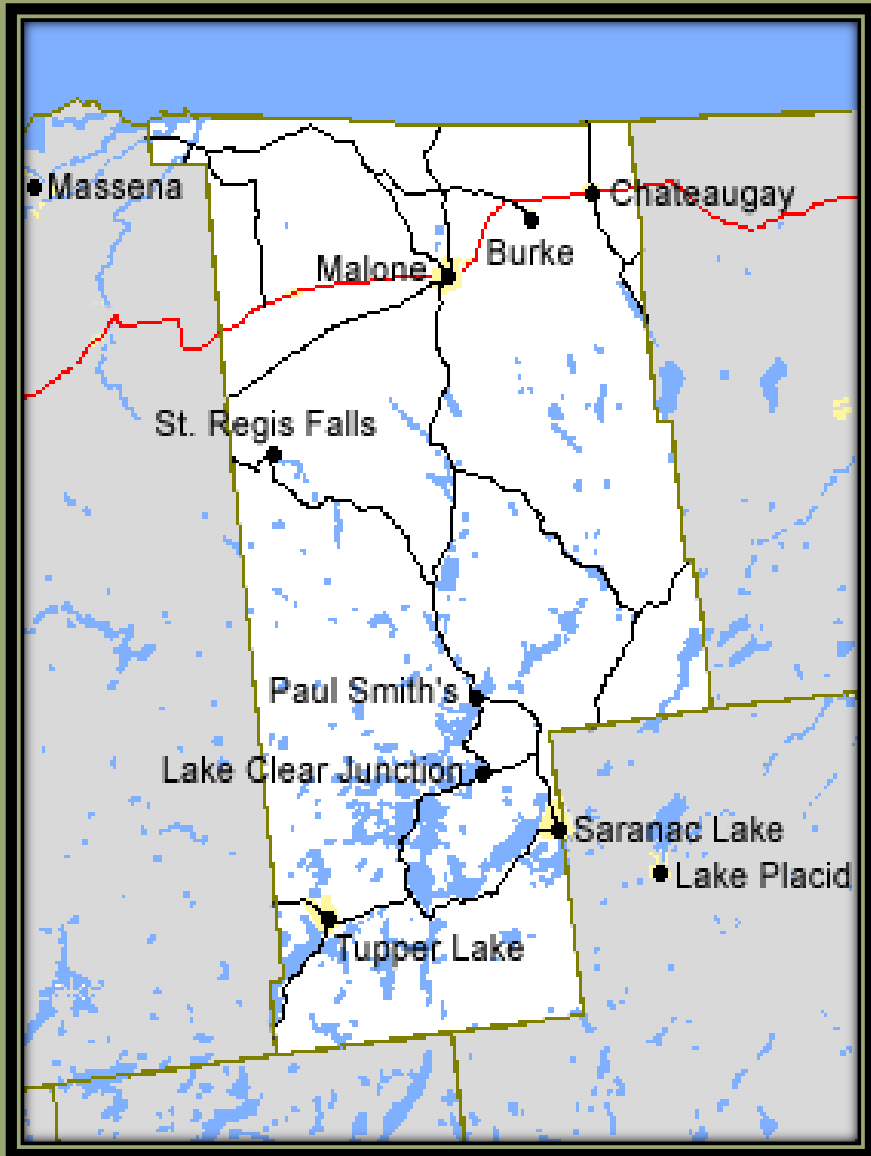
*St. Regis Falls was established on
July 4, 1856.*

*The Town of Waverly was formed on
November 22, 1880.*





= Saint Regis Falls, NY



The Town of Waverly is located:

- 8 minutes from State Route 11B.
- 10 minutes from the junction of State Routes 11B & 458.
- 20 minutes from the junction of State Routes 30 & 458.
- County Route 5 and State Route 458 goes through the center of the hamlet and town.
- 23 miles from Malone.
- 23 miles from Potsdam.
- 38 miles from Massena.
- 38 miles from Saranac Lake.
- 48 miles from Lake Placid.
- 52 miles from Tupper Lake.

Recreational Features of the Town:

- ***East Branch of the St. Regis River.***
- ***St. Regis Falls Scenic Campsite.***
- ***Town Beach.***
- ***SRF Skateboard Park.***
- ***Long Pond (boating and fishing area).***
- ***Azure Mtn Fire Tower Hiking Trail.***
- ***Snowmobile, UTV, & ATV trail system.***

The town and hamlet are nestled in the refreshing woodlands of the Adirondack Park, which makes it a destination to enjoy for its calming setting. Our town can be used as your base camp to explore the Adirondack Frontier of the North County and even Canada.

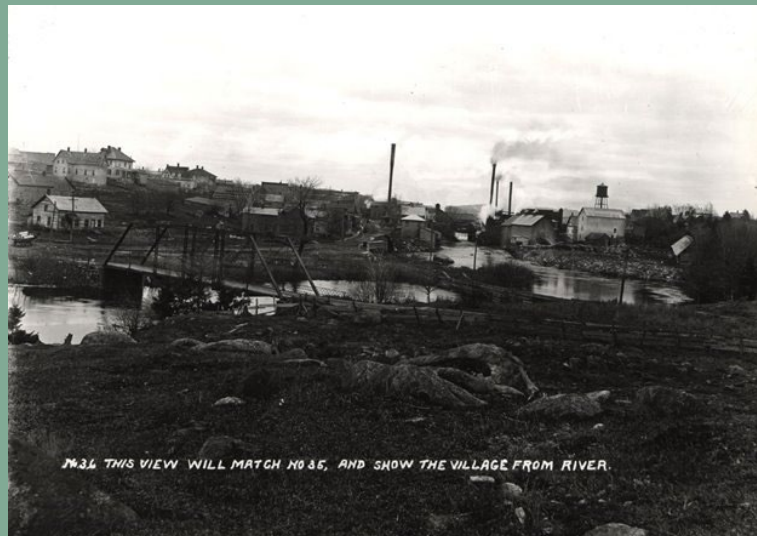
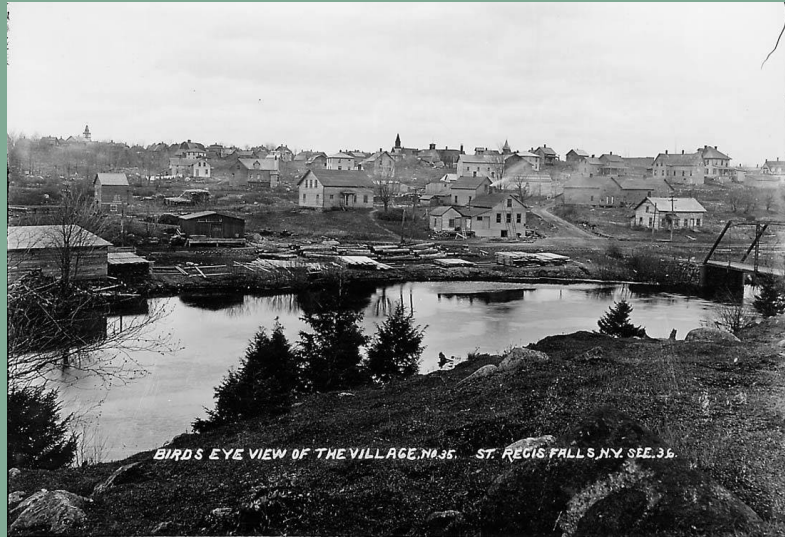
Historical Overview

The hamlet of (SRF) St. Regis Falls, NY was established on July 4, 1856 with a saw mill located at the waterfalls across from the present Town Office and Town Hall. The Town of Waverly was formed on November 22, 1880. SRF was incorporated in 1887 as a village, then the dissolution of its status as a village was approved on April 16, 1913.

Currently, the average year-round population of the hamlet of SRF is approximately 464 residents. The population of the Town of Waverly was 963 as of the 2020 US Census, with a decline in population of 5.8%. The area of the town is 126.4 square miles of which 125.1 square miles consists of land and 1.3 square miles is comprised of water.

The oldest buildings in the hamlet and town are the former Chair Factory Supervisor's House across from the SRF Scenic Campsite Administration Building dating to 1865, the Rectory of St. Anne's Church was built in 1883, and the Trinity Methodist Episcopal Church Parsonage was built in 1888.

A glimpse into our past



As a mill town on the river, the hamlet and town flourished from 1856 to 1937.

A Boom Town was born out of the woods

- On November 22, 1880, the Town of Waverly was formed from the Town of Dickinson, NY. At one point collectively the payrolls from this town was the largest in Franklin County. The draw for the early pioneers and laborers to this area were the plentiful resources of hardwood and softwood timber to lumber using the adequate amount of waterpower to transport and generate power to operate the saw mills to produce barrel staves and headings, clapboards, shingles, lathing, broomsticks, wooden boxes, chairs, cord wood was sent to Montreal for fuel and charcoal, pulpwood for making paper, and Hemlock bark was used to tan leather for shoes at the tannery. Lucrative lumbering and production was made possible due to the construction in 1883 of John Hurd's Northern Adirondack Railroad, which connected SRF to Ottawa, Canada to the north, Montreal via the Grand Trunk Railroad, and by the southern route to Tupper Lake down to Utica then using the New York Central Railroad System to the urban areas of Syracuse, Albany, Boston, and New York City. Notable local achievements were:
- 600 chairs made per day & shipped via the Northern Adirondack Railroad.
- Raw Mica from the Ottawa River Valley was processed into insulation & shipped via the Northern Adirondack Railroad.
- Millions of board feet of lumber were produced per season and shipped from here as lumber & finished products.
- The river was harnessed to generate power, provide recreational swimming, boating, day usage, bird watching, fishing, and a reservoir as a source of potable water.

Present Challenges and Goals for our Town:

- *Create a 5, & 10-Year Master Plan for the Town.*
- *Replace and upgrade the water and sewer main supply lines and the lateral lines.*
- *Fund a \$150,000 Salt and Sand Storage Facility.*
- *Replace the Town History Museum to have climate controlled archival storage & exhibition areas.*
- *Renovate the Town of Waverly Reading Center (in the Old Bank) with an ADA compliant entry, new front steps, replace doors, windows, the frames, sills, and casings. Replace the roof.*
- *Obtain Streetscapes Downtown Revitalization Initiative Funds and Small Business Grants.*
- *Replace the footbridge at the SRF Scenic Campsite. It has been damaged by debris, ice jams, and floods.*
- *A restaurant is needed in the hamlet.*
- *Construct a Civic Center for community activities.*

Departments, Officials, and Employees of the Town:

- Town Supervisor
- 4 Town Councilmen
- Hwy Supervisor with 3.5 Machine Equipment Operators.
- Water & Sewer Treatment Plant Operator & assistant.
- Town Historian of the Town History Museum.
- Town Reading Center Director
- Town Tax Collector (Real Property, Sewer, & Water).
- Town Clerk
- Town Justice
- Town Code Enforcement Officer
- Town Assessor
- 2 Recreation Attendants at the SRF Scenic Campsite.
- 5 Part-time Laborers (Summer Youth Corp).
- 4 to 5 Lifeguards for the Town Beach.
- Town Bookkeeper.
- Town Office & Medical Center Cleaner.
- Town Attorney
- 1 Town Dog Control Officer
- 1 Town Animal Control Officer (Cats)
- 3 Members of a Board of Assessment Review (BOAR).

Town owned community attractions



St. Regis Falls Scenic Campsite
19 Water St, St. Regis Falls



Wintertime fun for all ages.



150 ft. long Campsite footbridge



Lindsay Falls

Fun in the Sun at the Town Beach



Town of Waverly Beach
39 South River Road, St. Regis Falls.
A playground, basketball court, beach volleyball court, beach house with restrooms, a skateboard park, and a multi-use pavilion.

Town of Waverly Reading Center
18 North Main Street, St. Regis Falls, NY



Tower Pavilion for ice skating and public events with a Performance Stage.

Our Town owes its charm to its unique past and simple natural beauty.

Town History Museum

15 Water Street, St. Regis Falls, NY



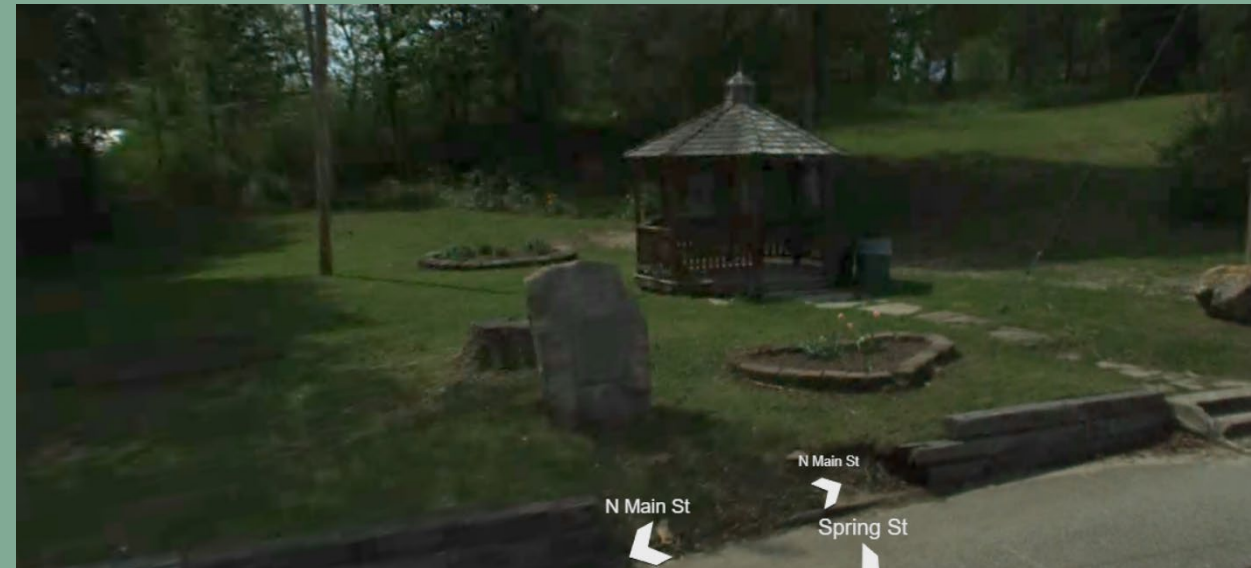
Fall Festival bird demo by Adirondack Raptors





Day Use Picnic Areas
with grills, fireplaces, and tables
overlooking the St. Regis River.

***Town Park and
Water System***
dedication
monument.



Looking back upstream to see the water flow over the falls, is like attempting to predict our future. We cannot see what is coming at us and where it will flow downstream.



Looking east & upstream on the East Branch of the St. Regis River.



The Old School built in 1927 and vacated in 2001.



Town Office, Town Hall, and the Fire and Rescue Departments

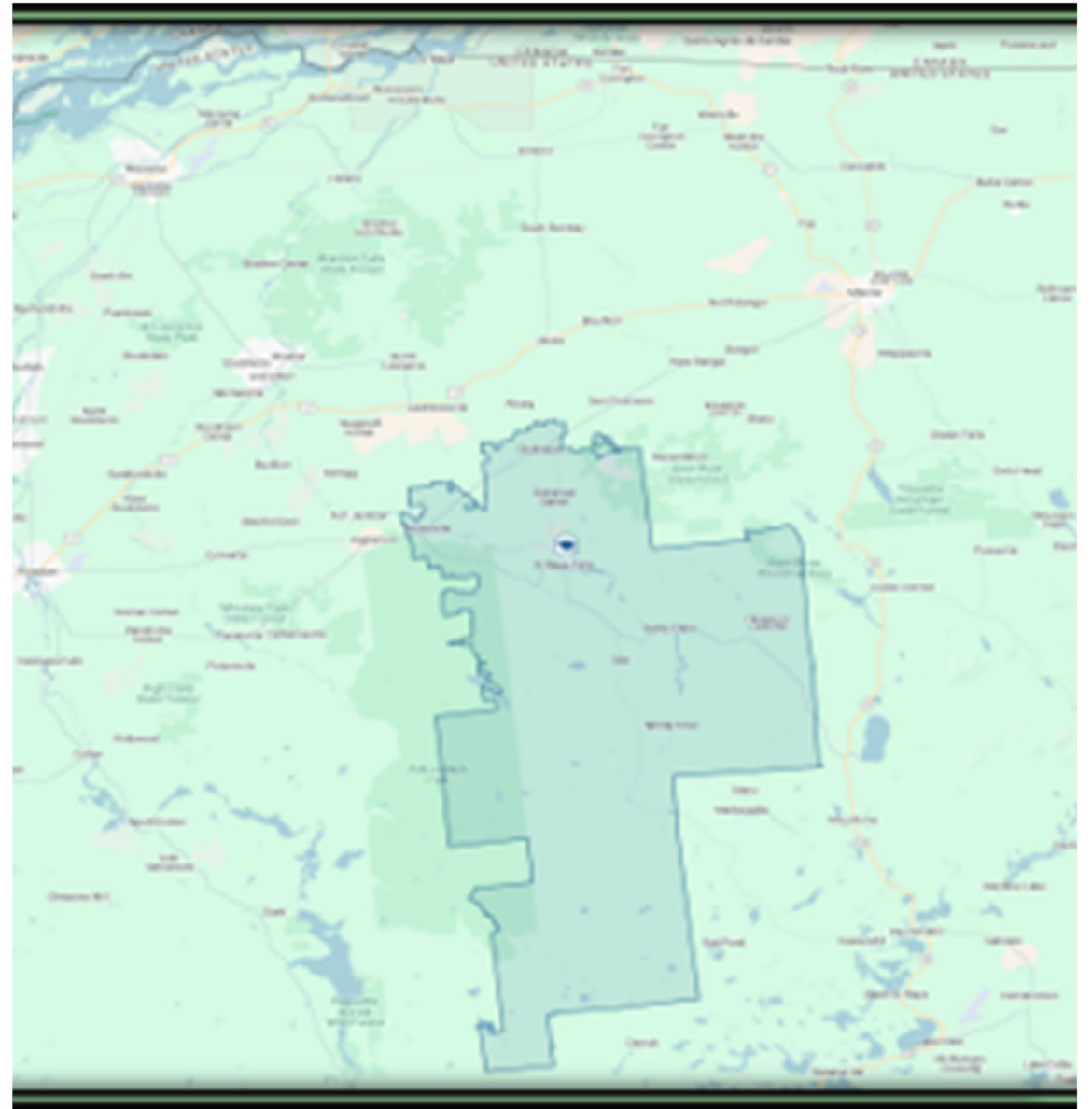
St. Regis Falls Central School District Home of the Saints

Is the largest employer in the town.

Pre-K through 12th Grade enrollment.

Serves 266 students from five townships
(Waverly, Dickinson, Santa Clara, Hopkinton,
& Lawrence).

Student-teacher ratio of 8:1.



Our Places of Worship in a small town with a big heart.



Top to bottom:

St. Anne's Roman Catholic Church & Rectory, est. 1883

Trinity Methodist Church, est. 1888

Free Methodist Church, est. 1914



St. Regis Falls
American Legion Post 322
Veterans Memorial Park





***St. Regis Falls Adult Center
& the Waverly Food Pantry***

Maple Leaf Housing Apartments



St. Regis Falls Riverfront Apartments



St. Regis Falls Cat Palace and Rescue



Downstream aerial views of the footbridge and Lower Campsite Area



Azure Mountain Fire Tower



Let's step onto a new path together to lofty heights of possibilities for a journey to better days ahead.

Thank you for your interest.



Please come visit us!