



**Adirondack
Park Agency**

**Department of
Environmental Conservation**

No Material Increase of Road Mileage on Wild Forest – Board Member Q&A

November 16, 2022

Objectives for Today

- Respond to inquiries from board members that have come in since the September Agency meeting and presentation of public comments received
- Prepare board members to deliberate on this matter at the next Agency meeting
- No deliberation or decisional action slated for today's committee meeting

Revisiting Decision Points

1. 1972 Road Mileage Determination

- What road mileage existed on Wild Forest lands in 1972? What road mileage exists on Wild Forest lands today?

2. No Material Increase Interpretation

- What mileage increase is allowed without constituting a material increase?

3. Definition of Road Interpretation

- Does CP-3 mileage meet the definition of road in the APSLMP and therefore require inclusion in the total Wild Forest road mileage calculation?

No Material Increase Alternatives

- NMI Alternative 1: 15% increase in road mileage
 - Consistent with snowmobile trail NMI interpretation
 - Snowmobile trails and roads treated similarly in APSLMP
- NMI Alternative 2: Increase more than 15%
 - Account for no replacement of mileage closed due to reclassification of wild forest to wilderness, primitive, or canoe
 - Board would have to set percentage or mileage
- NMI Alternative 3: Increase less than 15%
 - Recognize difference in treatment of roads and snowmobile trails in the SLMP
 - Board would have to set percentage or mileage

Definition of “Road” Alternatives

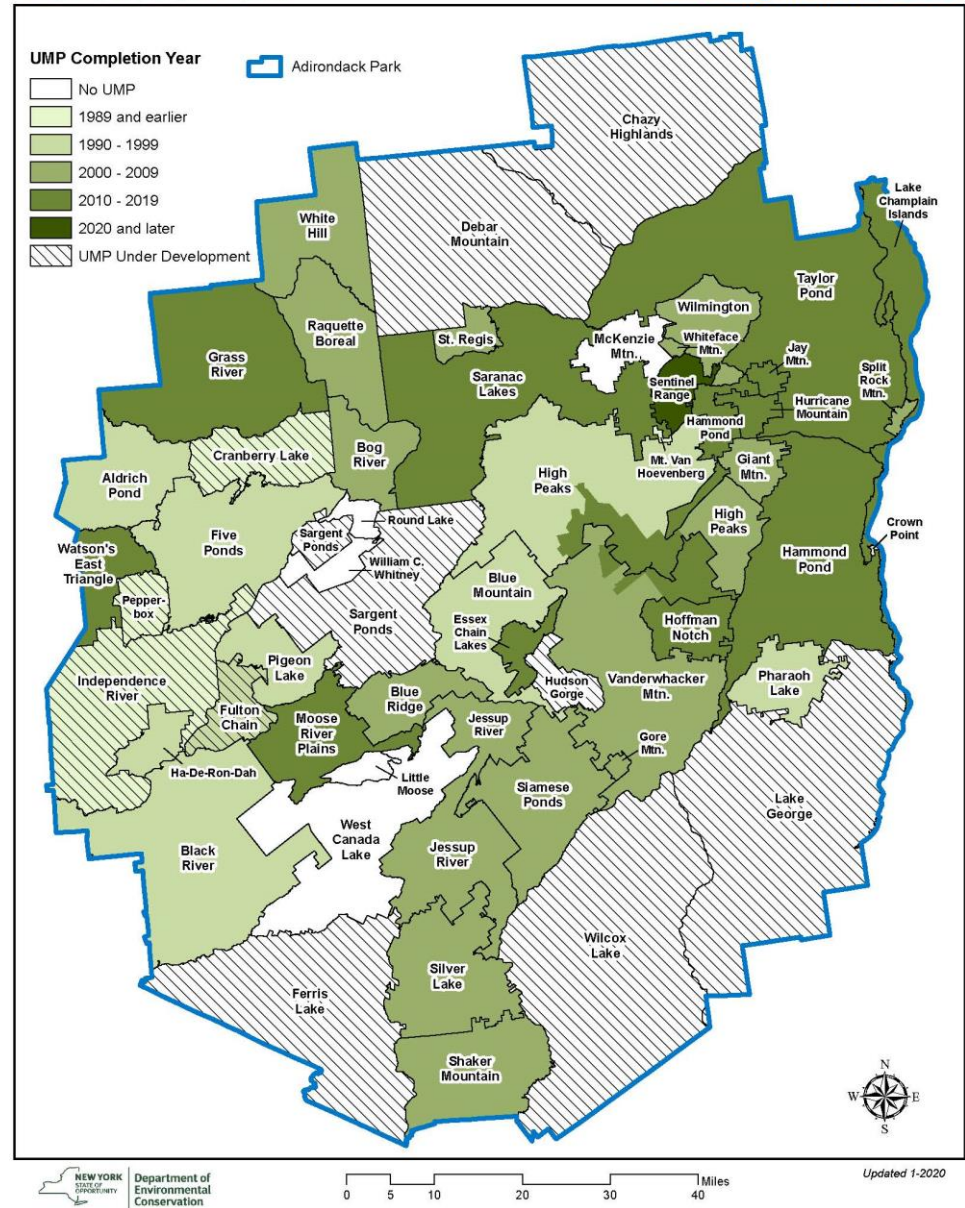
- Road Definition Alternative 1 - CP-3 included
- Road Definition Alternative 2 - CP-3 not included
- Road Definition Alternative 3 - Non-Galusha CP-3 included

Remaining Wild Forest UMPs

- 6 WF units do not have final adopted UMPs:
- Chazy Highlands
- Debar Mountain
- Wilcox Lake
- Ferris Lake
- Sargent Ponds
- Lake George

Adirondack Park

Unit Management Plan Status



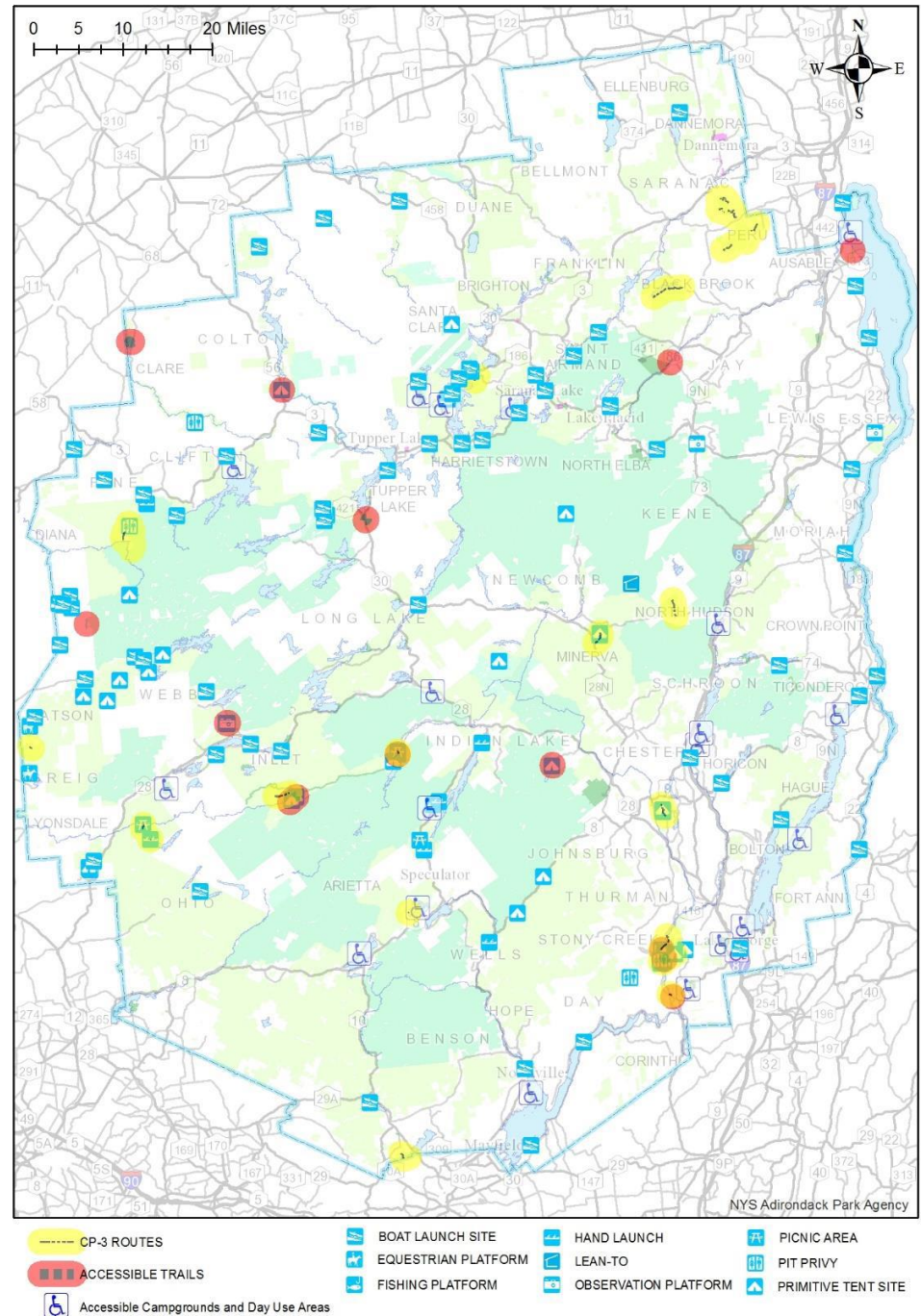
Park-Wide Acreage Statistics

Land Class	1972 Acreage	Current Acreage	Change in Acreage	% Change
Wilderness	997,960	1,186,399	188,439	18.9%
Primitive	75,670	38,215	-37,455	-49.5%
Canoe	18,100	17,325	-775	-4.3%
Wild Forest	1,186,747	1,324,025	137,278	11.6%
Intensive Use	10,000	22,614	12,614	126.1%
Historic	0	522	522	
State Admin	0	2,028	2,028	
Pending	0	5,793	5,793	
Total	2,288,477	2,596,921		13.5%

NOTE: The 1972 SLMP detailed acreage by unit for wilderness, primitive, and canoe only – not for wild forest or intensive use. The historic and state administrative classifications did not exist at that time. 1972 figures are rounded due to mapping and measurement limitations.

CP-3 Route Distribution

- Current CP-3 mileage is 21.6 (routes agreed to under Galusha settlement)
- There are 16.5 additional miles of CP-3 routes approved in UMPs that are not yet opened
- Details on CP-3 routes available at: https://www.dec.ny.gov/docs/lands_forests_pdf/mappwdroutes.pdf



Future CP-3 Opportunities

Adirondack Wild Forest CP-3 Mileage Approved, but Not Opened

Wild Forest Name	CP-3 Route Name	2022 Miles
Aldrich Pond	Jackworks/Maple Hill Roads	1.1
Saranac Lakes	Dunlap Road	0.8
Vanderwhacker Mtn.	Branch Road	2.2
Taylor Pond	Burnt Hill State Forest Roads	4.9
Taylor Pond	Taylor Pond Road (South Shore)	3.8
Taylor Pond	Military Pond Trail (Terry Mtn. State Forest)	1.5
Taylor Pond	Mud Pond Trail (Terry Mtn. State Forest)	0.6
Shaker Mtn.	Peck Creek Road	0.7
Shaker Mtn.	Old State Road	0.7
Jessup River	Peasley Access Road	0.2

Total: 16.5 miles

Snowmobile Trail Mileage 15% Topic

- **1980** – DEC inventory - 848.88 miles of existing trails
- **1998** – DEC Policy (ONR-2) sets 848.88 as a mileage "cap"
- **2008** – APA resolution on WFBG#4:
 - Included 1972 mileage figure
 - Acknowledges DEC policy, including mileage cap
 - Finds cap to not be a material increase
 - 14.7% difference between 1972 and mileage cap

Examples of Wild Forest Road Closures

Adirondack Wild Forest Public Road Mileage

May 2022

Wild Forest Name	1972 Miles	2022 Miles	Miles Gained on Lands Classified Wild Forest since 1972	Miles Lost on Lands Classified out of Wild Forest Since 1972	Road Closures for Reasons Other Than Land Re-Classifications
Aldrich Pond	11.9	14.5	6.3	0.0	3.7
Black River	35.8	38.5	3.3	0.0	0.5
Blue Mountain	0.0	10.6	10.6	0.0	0.0
Champlain Islands	0.0	0.0	0.0	0.0	0.0
Chazy Highlands	2.0	2.0	0.0	0.0	0.0
Cranberry Lake	6.3	0.0	0.0	0.0	6.3
Debar Mountain	3.2	9.2	6.0	0.0	0.0
Ferris Lake	7.4	10.1	2.7	0.0	0.0
Fulton Chain	0.9	0.9	0.0	0.0	0.0
Grass River	3.0	7.3	4.3	0.0	0.0
Hammond Pond	1.0	1.0	0.0	0.0	0.0
Horseshoe Lake	2.7	5.4	3.8	1.1	0.0
Independence River	58.8	38.6	5.3	0.0	22.9
Jessup River	0.4	1.1	0.9	0.0	0.0
Lake George	4.3	14.2	9.9	0.0	0.0
Moose River Plains	34.9	12.4	2.2	22.5	2.2
Raquette River	0.2	0.2	0.0	0.0	0.0
Saranac Lakes	6.8	6.9	1.9	0.0	1.8
Sargent Ponds	0.0	0.0	0.0	0.0	0.0
Shaker Mountain	0.0	0.1	0.1	0.0	0.0
Split Rock	0.0	0.0	0.0	0.0	0.0
Taylor Pond	22.3	5.5	0.6	0.0	17.4
Vanderwhacker Mountain	4.4	14.3	9.9	0.0	0.0
Watson's East Triangle	0.0	13.3	13.3	0.0	0.0
White Hill	0.0	0.1	0.1	0.0	0.0
Wilcox Lake	4.8	0.4	0.0	0.0	4.4
Wilmington	0.5	0.0	0.0	0.0	0.0

Totals: 211.6 206.6
 Net Change in Road Mileage: -5.0
 Percent Change in Road Mileage: -2.36%

81.2

23.6

59.2

Examples of WF Road Closures

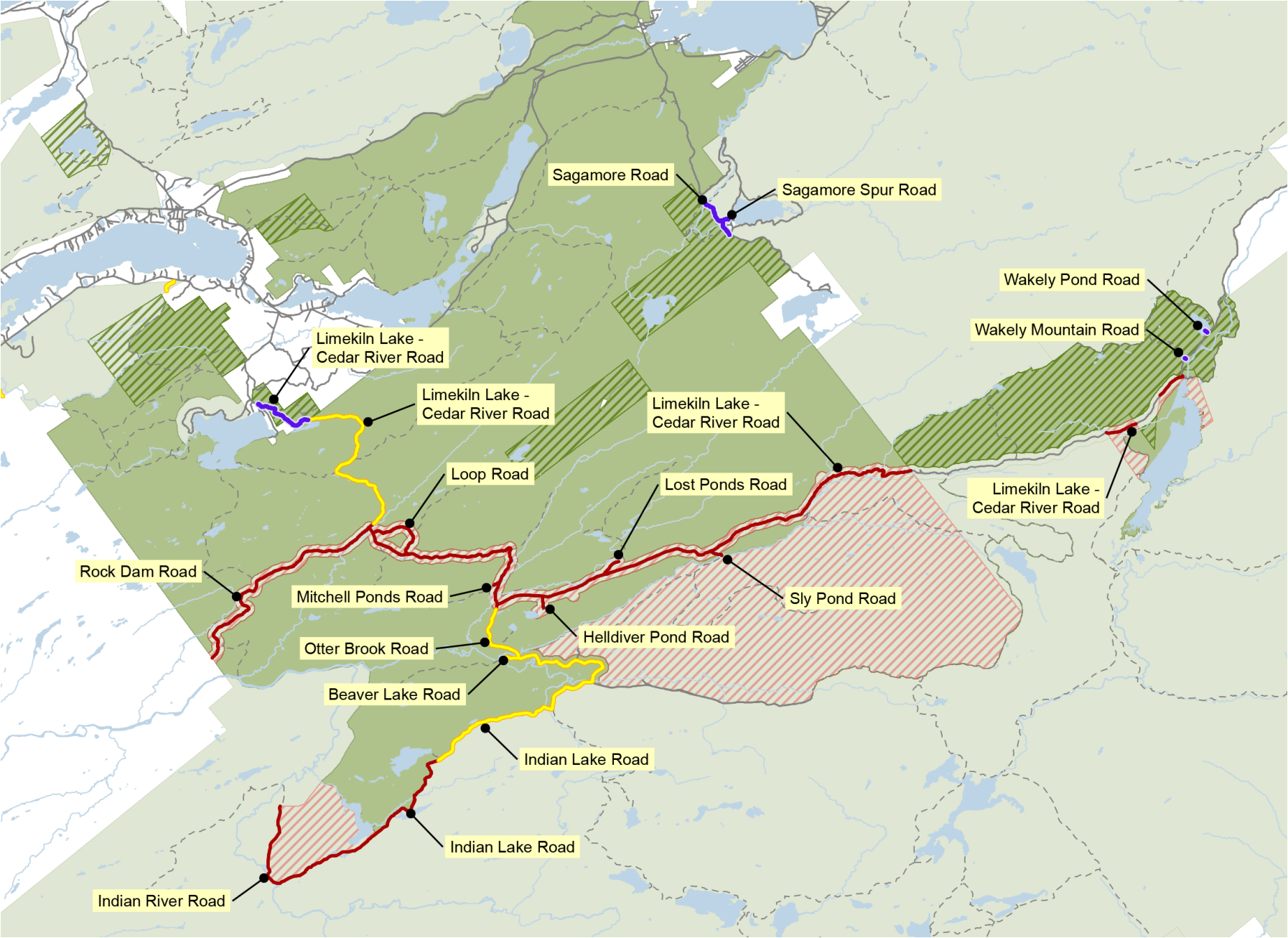
Independence River Wild Forest – 1986 UMP

- "In order to provide an adequate buffer to wilderness..."
- "...prevent the continuing decline in the area due to the development of "herd path" type jeep trails..."
- "Many of these roads generally serve no specific destination but rather serve as temptations for continuing Jeep and ATV herd path meanderings."

Examples of WF Road Closures

Moose River Plain Wild Forest – 2011 UMP

- Limekiln Lake – Cedar River Road
- Indian Lake Road – closed 2.3 miles as a buffer to adjacent wilderness



Considerations for Wild Forest Roads

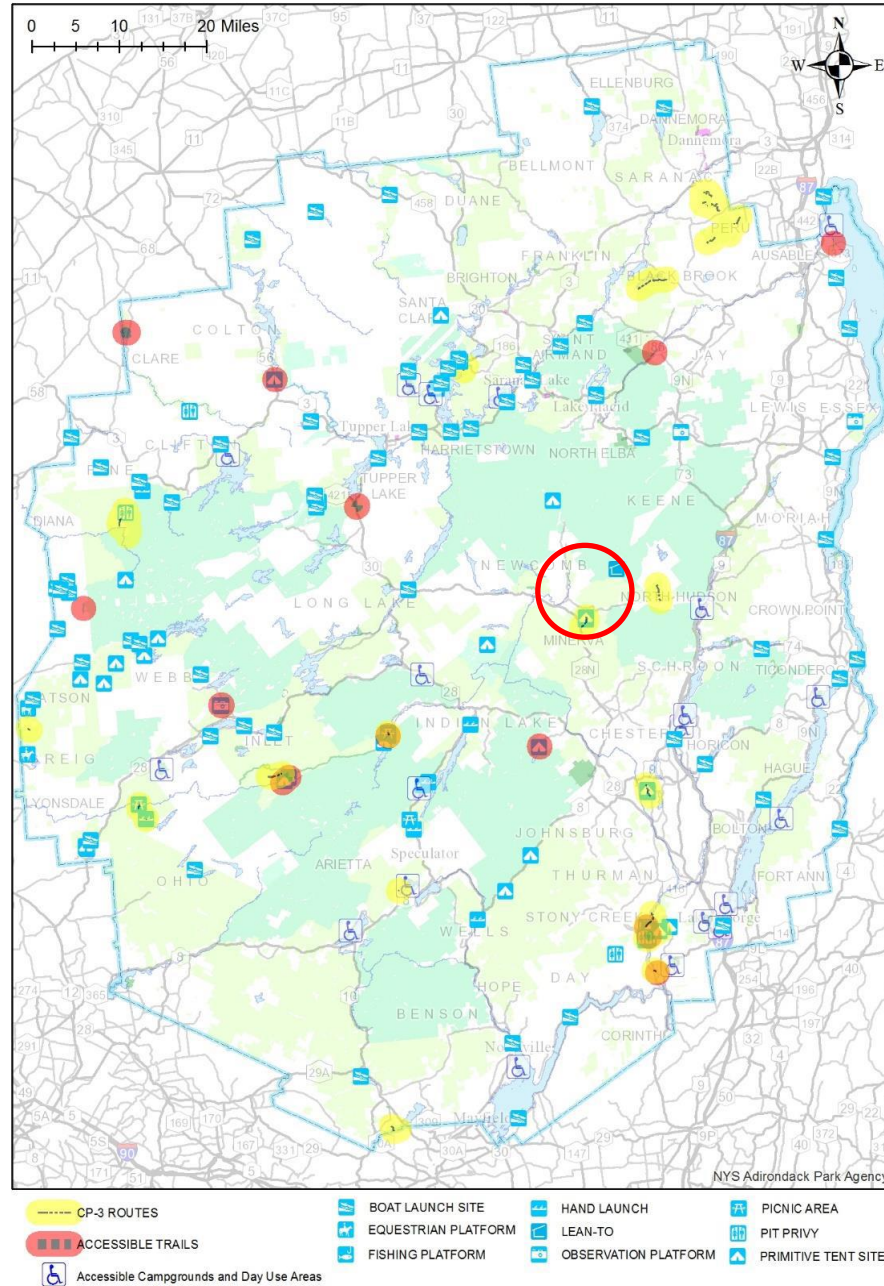
- Quality of opportunity provided
- Prevalence (or scarcity) of opportunity within local area
- Quality of existing road infrastructure
- Impacts to adjacent Forest Preserve lands
- Maintenance obligations
- Access vs. remoteness
- Public comment – UMP *and* classification process
- Historical use of both road and destination
- Maintenance partnerships
- Others...

Vanderwhacker Mountain Wild Forest - Boreas Ponds Tract

The map displays the Boreas National Monument and surrounding regions. Key features include:

- Wilderness Areas:** High Peaks Wilderness, Vanderwhacker Mountain Wild Forest, Hoffman Notch Wilderness, and Elk Lake Conservation Easement.
- Roads:** Boreas Rd, Gulf Brook Rd, Blue Ridge Rd, and Elk Lake Rd.
- Trails:** Boreas River Trail, Wolf Pond Trail, Boreas Ponds Trail, Ragged Mountain Trail, and others.
- Parking Areas:** Marked with 'P' and labeled with vehicle counts (e.g., Bunting 6 vehicles, Four Corners 10-15 vehicles, Fly Pond 20 vehicles, Blue Ridge Rd. 10 vehicles).
- Legend:**
 - Wild Forest Area (light green)
 - Wilderness Area (light blue)
 - Primitive Area (light purple)
 - New Addition to Vanderwhacker (dashed green line)
 - Conservation Easement (brown)
 - Proposed Day Use Area (pink)
 - Administrative Use Area (white circle)
 - Existing Parking - Non-Trailer (black 'P')
 - Existing Parking - Trailer (white 'P')
 - Proposed Parking - Non-Trailer (green 'P')
 - Proposed Parking - Trailer (green 'P')
 - Public Motor Vehicle Road (thick black line)
 - Administrative Road (thin black line)
 - Existing Recreational Trail (dashed line)
 - Proposed Recreational Trail (dashed green line)
 - Existing Gate (black line with crossbar)
 - Proposed Gate (green line with crossbar)

CP-3



Questions?

Contact Information:

Megan Phillips

Deputy Director for Planning – NYSAPA

Megan.Phillips@apa.ny.gov

(518) 891-4050

Josh Clague

Section Leader, Forest Preserve Policy & Planning

Adirondack Coordinator – NYSDEC

Josh.Clague@dec.ny.gov

(518) 408-5508