



**Olympic Regional
Development Authority**

APA Meeting Presentation:

*Proposed 2021 Amendment of the
Whiteface Mountain Unit Management Plan*

October 14, 2021

Acknowledgements

NYS Olympic Regional Development Authority

Aaron Kellett, General Manager, Whiteface Mountain

Bob Hammond, Director, Office of Environmental, Planning and Construction

Michelle Crew, General Counsel

Emma Lamy, Sustainability and Environmental Compliance Officer

The LA Group, P.C.

Kevin Franke, Mark Taber

Tahawus Trails, LLC

Eddie Walsh, Wes Campman, Zach Campbell, Erik Mickelson, Luke Peduzzi



Outdoor Recreation at Whiteface- #1 Vertical Drop in Eastern United States

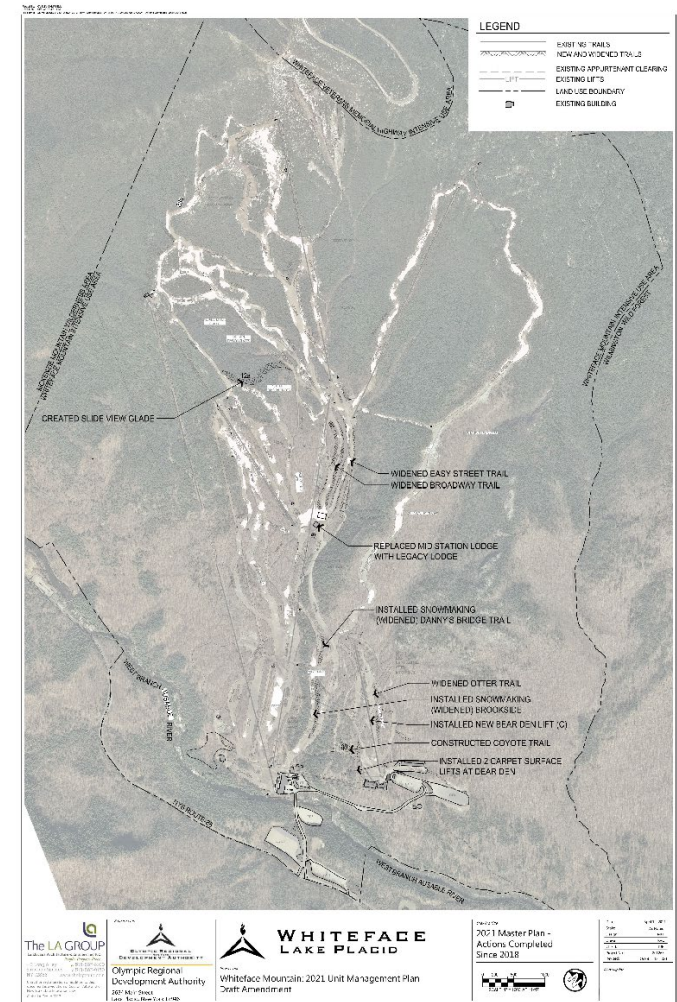


Outdoor Recreation at Whiteface



Management Actions Completed Since the 2018 Amendment to the UMP

- Expansion of Bear Den Lodge
- Replaced Bear Den Lift with Falcon Quad
- Installed Snowmaking/Widened Danny's Bridge and Brookside Trails
- Replaced Mid-Station Lodge with Legacy Lodge
- Widened Otter, Easy Street, & Broadway Trails
- Created Slide View Glade
- Created Coyote Trail
- Installed 2 Carpet Surface Lifts at Bear Den
- Bear Lift Replacement with Quad



Planning Variances Since 2018

Expanded Bear Den Lodge

**Evolution of Safe Racing Standards for Trail
Certifications**

World University Games

Increased Demand for Hiking & Biking

New & Relocated Mid-Station Lodge

Pandemic

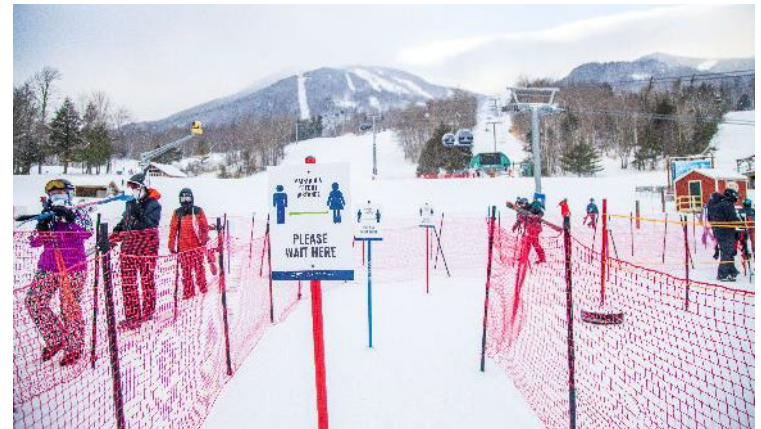
Increased Demand for Outdoor Recreation



I ♥ NY



**FISU
WORLD
UNIVERSITY
GAMES
WINTER**



COVID-19 Protocols



Advanced Ticketing w/RFID & E-Commerce

Safety Signage & Pre-Arrival COVID-19 Communications

0 Cases of COVID-19 Transmission Traced to Workplace



Objectives of New Management Actions

Continued modernization of the Whiteface facilities

Improved access to appropriate terrain for beginner and intermediate skiers

Increased public accessibility

Commitment to user safety

Enhancement of recreational experiences

Reduction in total approved mileage

Compliance with the Adirondack Park State Land Master Plan and Article XIV of the NYS Constitution

New Management Actions: Race Trail Widening

Facilitate a growing number of national and international events, and athlete training

Meeting international FIS standards for certification on two trails

Separation of racers from recreational enthusiasts, so both groups have a better experience



New Management Action: Lift from Bear Den to Legacy Lodge

Enhances Learning Experience

Increased Reliability & Safety

Spread out Skiers

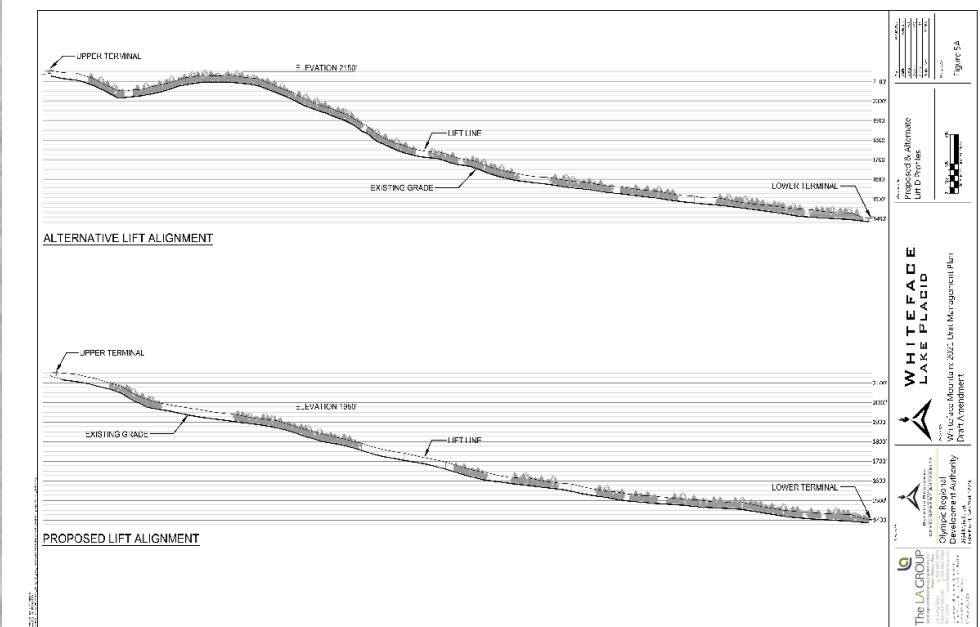
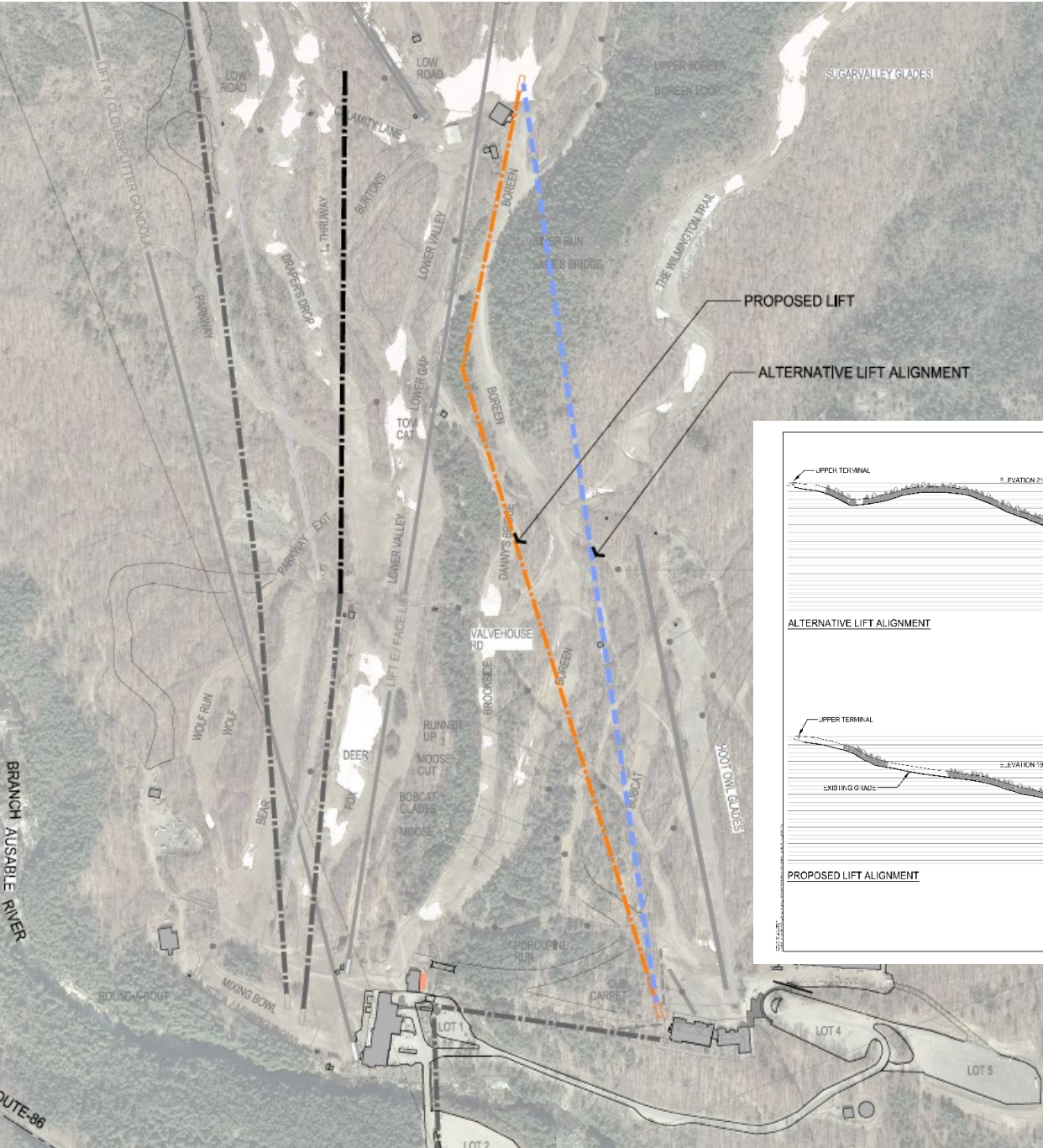
Increased Utilization of Bear Den &
Mid-Station Lodges

Allows for Base Area lift to terminate
at the Mid-Station area

2018 UMPA factored in old location
of Mid-Station Lodge



New Management Action:
Lift from Bear Den to Legacy Lodge



New Management Action: Widening of Existing Trails & 3 New Connector Downhill Trails



Keeps lower level skiers in areas more appropriate to their ability

The three connectors range in length of 260-560'

Wider trails facilitate improved traffic flows, snowmaking, and grooming

Net Mileage Adjustments

2021 Trail Mileage Summary

<i>Summary of Totals</i>	<i>(In Miles)</i>
Total Existing Trails	19.95
Total Approved/Not Constructed Trails	2.47
<i>Total Existing and Approved Trails</i>	<i>22.42</i>
Total Proposed Trails	0.25
Total Previously Approved, No Longer Proposed Trails	-0.32
<i>Total Existing/Approved and Proposed Trails</i>	<i>22.35</i>
Constitutional Trail Mileage Limit	25.00
<i>Total Allowable Trail Mileage Remaining</i>	<i>2.65</i>

New Management Actions: Hiking and Mountain Biking Development

Frontcountry Solutions to Backcountry Problems
Developed 5-Phase Master Plan
Multi-Use Trails
Utilizes Existing Infrastructure



New Management Actions: Mountain Biking

Provide lift-serviced mountain biking between Bear Den Lodge & Legacy Lodge via proposed lift, as well as cross-country options

Interconnections to regional networks, particularly the Wilmington Wild Forest

Modernized Layout
Appropriate for All Levels

New Management Actions: Hiking

Expand upon and improve interconnections between WFM intensive use area and Wilmington Wild Forest, Flume Trail systems

Provide a variety of routes for various ability levels

Lift serviced hiking access between Bear Den Lodge & Legacy Lodge via proposed lift

Provide hiking access from the Cloudsplitter Gondola, Summit of Little Whiteface (top of Gondola), as well as Bear Den and Legacy Lodges



The graphic is a promotional poster for the Whiteface Hiking Center. At the top, a green banner features a hiker icon and the text "WEST BRANCH NATURE TRAIL". Below this, it states "DISTANCE: 1.9 MILE LOOP" and "ESTIMATED TIME FOR AVERAGE HIKER: 1.5 HOURS". To the right are three circular icons: "WEST BRANCH NATURE TRAIL" (FASTEST), "BEAR DEN TRAIL" (MORE DIFFICULT), and a diamond-shaped icon for "HIGHER ELEVATION" and "MOST DIFFICULT". The main title "WHITEFACE HIKING CENTER" is prominently displayed in the center, with a hiker icon integrated into the word "HIKING". Below the title, it lists "TRAILS FOR ALL ABILITIES • DINING • TOURS AND MAPS • EVENTS". The background is a scenic view of a mountain peak with hikers. In the bottom right corner, there is a circular logo with a hiker icon and the text "VISIT AND CONNECT TRAIL MARKER". At the bottom, contact information is provided: "Whiteface.com (518) 946-2223 Whiteface Mountain | 5021 Route 86, Wilmington, NY 12997". The New York State of Opportunity logo is also present in the bottom right.

WEST BRANCH NATURE TRAIL
DISTANCE: 1.9 MILE LOOP
ESTIMATED TIME FOR AVERAGE HIKER: 1.5 HOURS

WHITEFACE HIKING CENTER
TRAILS FOR ALL ABILITIES • DINING • TOURS AND MAPS • EVENTS

NEW YORK
STATE OF OPPORTUNITY.

VISIT AND CONNECT
TRAIL MARKER

Whiteface.com (518) 946-2223 Whiteface Mountain | 5021 Route 86, Wilmington, NY 12997

New Management Action: NYSEF Building Expansion



Proposed Tree Cutting

Management Action	Tree $\geq 3"$ DBH
Widen Upper Thruway Trail	1828
Widen Upper Parkway Trail	958
Widen Lower Thruway Trail	2524
Widen Burton's Trail	787
New Bear Den to Legacy Lift	1408
New Trail 93 Beneath New Lift	1789
New Yellow Dot Trail	73
Widen Wildway Trail	90
New High Country Road Trail	678
Widen 2200 Road Trail	451
Widen Danny's Bridge Trail	440
Widen Brookside Trail	1108
New Hiking & Mtn Biking Trails	8251
Expand NYSEF Building	110
TOTAL	20495

Additionally, a total of 13,091 trees 1-3" DBH are proposed to be cut.

NET TREES

20,495 (Proposed Plan)
 -2,305 (Lift Giveback)
-3,452 (Trails Giveback)
14,738 (Net Trees)

Sensitivity to Bicknell's Thrush Habitat

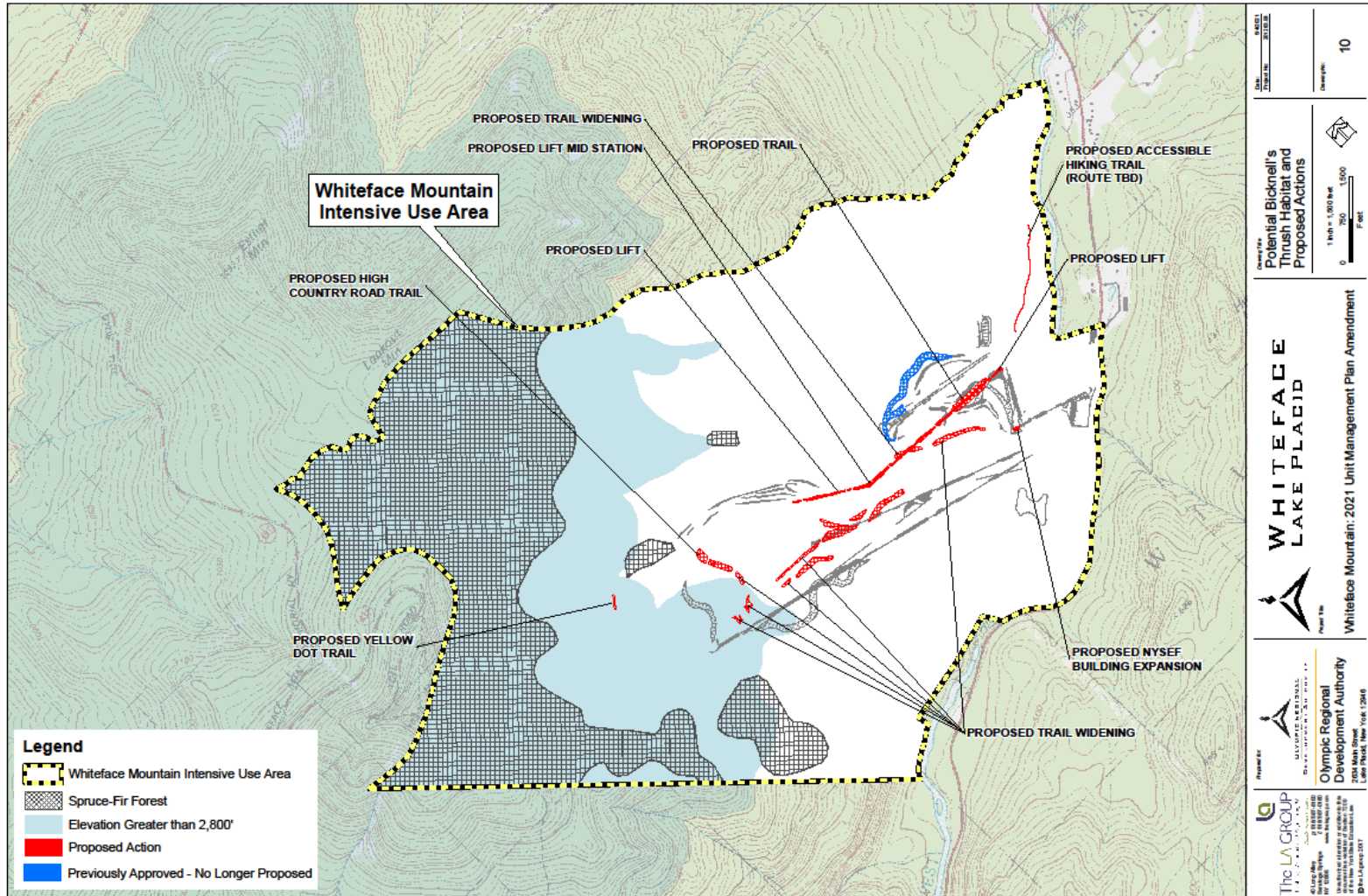
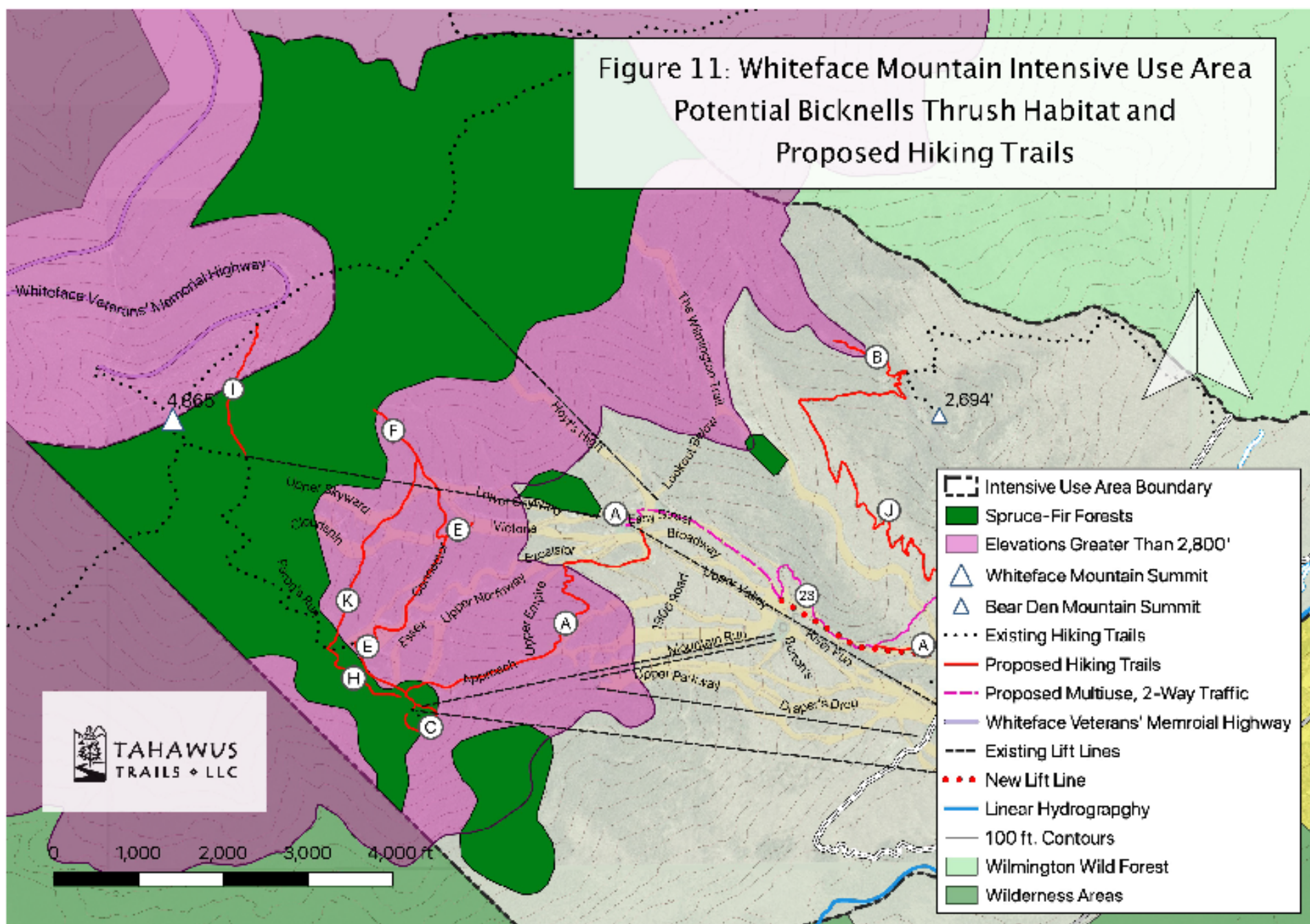


Figure 11: Whiteface Mountain Intensive Use Area
Potential Bicknells Thrush Habitat and
Proposed Hiking Trails



For Review & Public Comments

The public comment period will officially begin on October 27th, 2021, simultaneous with the UMP amendment posting in the Environmental Notice Bulletin (ENB).

Public comments can be submitted through the link below.

<https://orda.org/public-comments/>

The UMPA can be accessed here:

<https://orda.org/whiteface-draft-2021-umpa/>

Physical copies of the UMPA can be found at the following locations:
Wilmington Town Hall, Whiteface Mountain Administration Offices,
and the ORDA Administration Office.



**Olympic Regional
Development Authority**