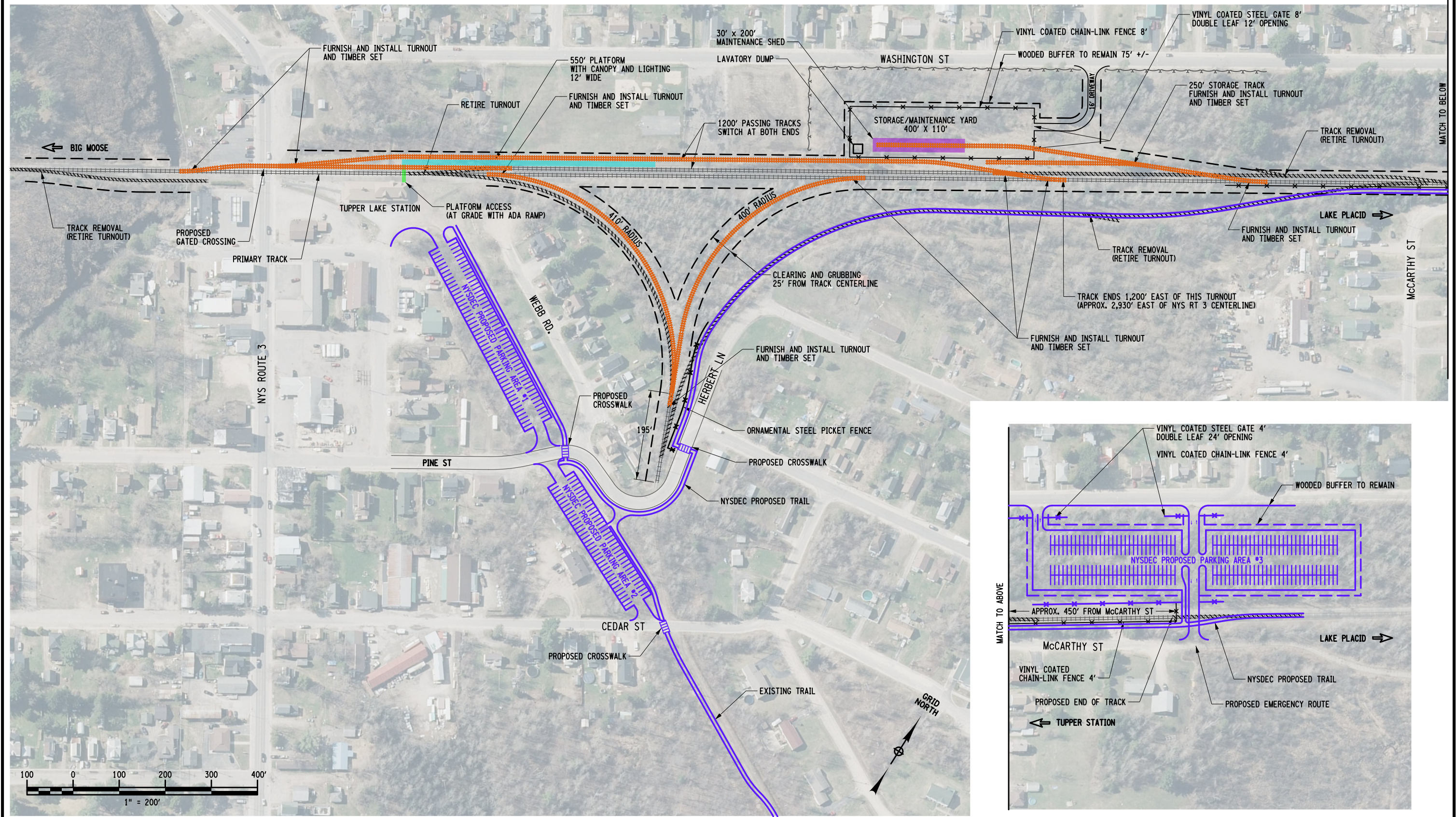







FILE NAME = S93765_cph_gnp_concept1.dgn
DATE/TIME = 07-NOV-2019 14:02
USER = ecoulter

DESIGN SUPERVISOR E. COULTER, P.E. JOB MANAGER E. COULTER, P.E. DESIGN E. POPA CHECK E. COULTER, P.E. DRAFTING EUGEN POPA CHECK E. COULTER, P.E. PROJECT MANAGER L. TENNYSON, P.E.



| LEGEND | | | | | | | | | | |
|---|--|---|---|--|--|-------------|---------|----------|---|---------------------------------|
| SYMBOL | | DESCRIPTION | | | | | | | | |
|  (NEW LOCATION) |  (EXISTING LOCATION) | STONE BALLAST SURFACING COURSE ON TRACKS FURNISH, AND INSTALL JOINTED RAIL (10SDY) REMOVE AND INSTALL WOOD CROSS TIES FURNISH AND INSTALL TIE PLATES FURNISH AND INSTALL RAIL ANCHORS FURNISH AND INSTALL BOLT SETS FURNISH AND INSTALL JOINT BARS RAISE ALIGN AND SURFACE TRACK | AS-BUILT REVISIONS DESCRIPTION OF ALTERATIONS: | ADIRONDACK RAILROAD | | PIN S937.65 | BRIDGES | CULVERTS | ALL DIMENSIONS IN ft UNLESS OTHERWISE NOTED | CONTRACT NUMBER |
| | | | | REMSEN - LAKE PLACID TRAVEL CORRIDOR | | | | | GENERAL PLAN TUPPER LAKE CONCEPT PLAN | DRAWING NO. GNP-01 SHEET NO. |
| | | | | TRACK REHABILITATION BETWEEN BIG MOOSE AND TUPPER LAKE | | | | | | |
| | | | | TOWN OF WEBB, LONGLAKE, COLTON, PIERCEFIELD, ALTAMOUNT | | | | | | |
| COUNTY: VARIOUS REGION: 02 | | | | | | | | | | |
|  | TRACK REMOVAL | | | | | | | | | |
|  | WORK BY OTHERS (NYSDEC) | | | | | | | | | |
| | | | | | | | | |  | Department of Transportation |